

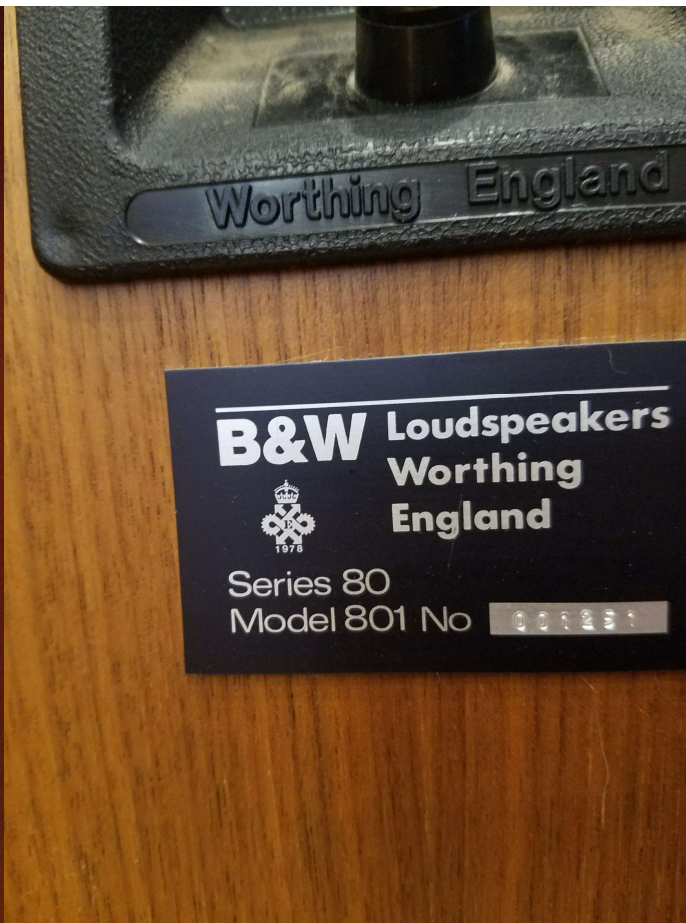
B&W 801 Series 80

S/N 1251 & 1252

January 1980 → August 2018

A bit rough but
not really bad.





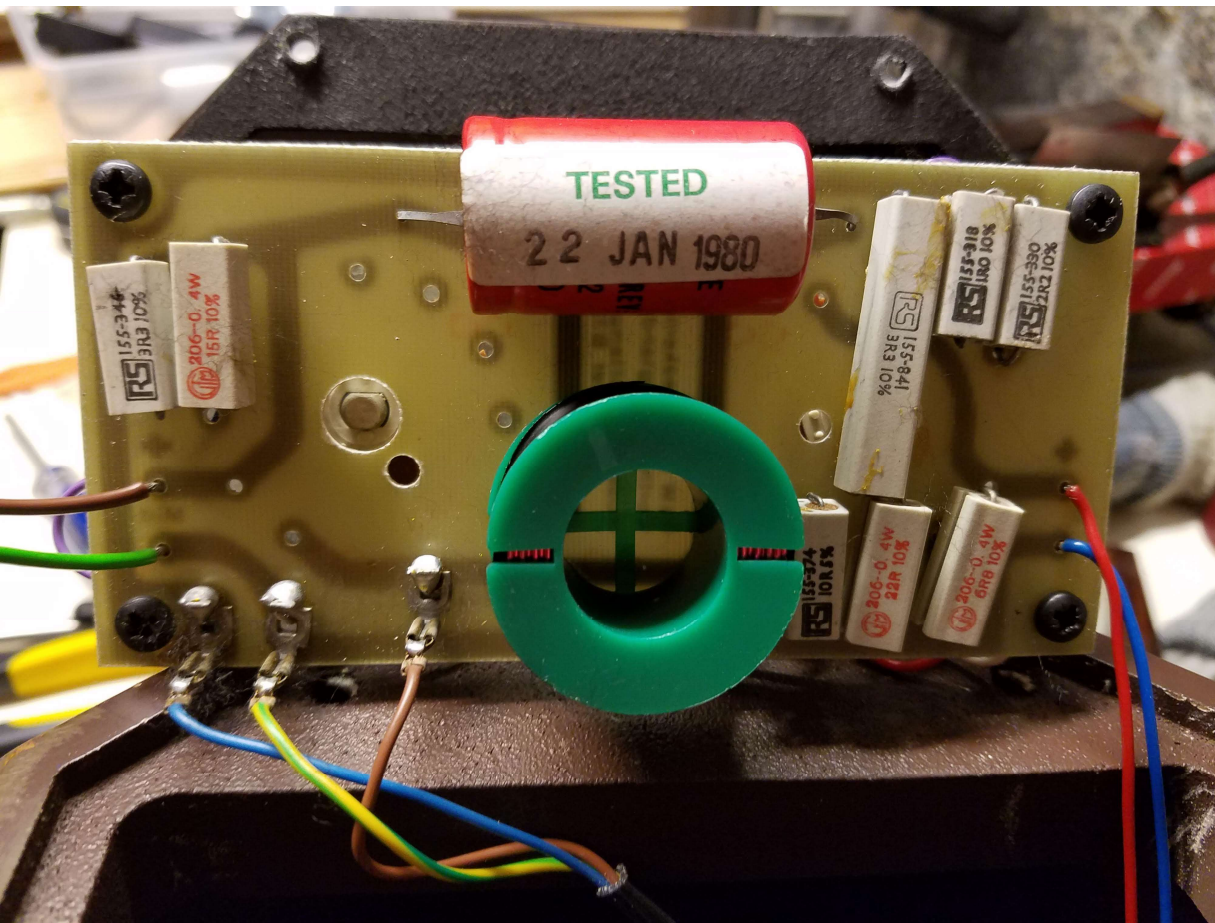
S/N 1251 & 1252

HF+LF XO board
is marked 1283
& 1284

After soldered-in
relay (s/n 901)

Before 1000uF
protection cap
(s/n 1587)

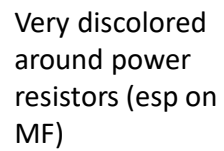
Before 801F
fibre-crete head
(s/n 4001)



LF enclosures
"18 Jan 1980"

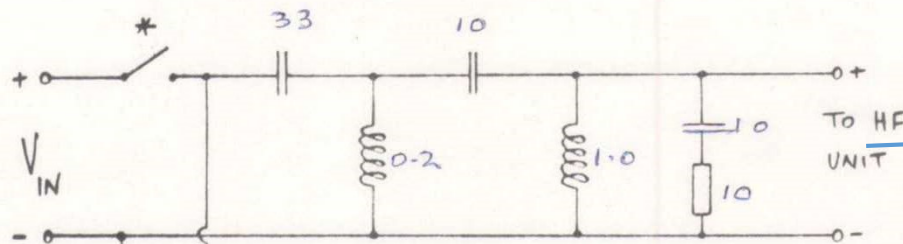
EQ board
"tested 22 Jan
1980"

XO component
date codes 7944,
8001, etc

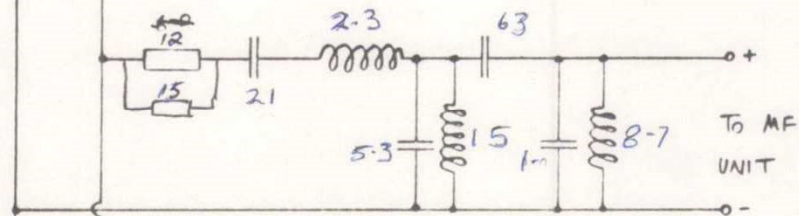


Mods

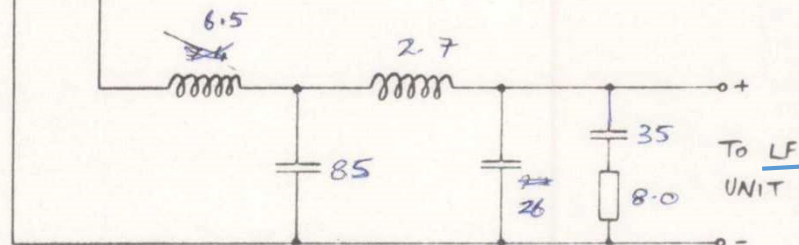
- Disconnect the protection circuit and bypass the relay
- Bi-Amp: HF+MF on separate input from LF (including separate ground)
 - New binding posts underneath bass unit
- Replace most crossover components
 - Capacitors – Solen PP everywhere, and Mundorf for HF input
 - Resistors – Vishay-Mills MRA12 1% (non-inductive 10W)
 - Inductor – Solen 2.3mH aircore for MF
- Misc/Cosmetic
 - Scrape & oil bass cabinet (condition was OK, minor dings)
 - Raam deadening mat in MF & LF enclosures
 - Sand & re-paint MF+HF head cabinet
 - New grill cloth from Huntley Audio on ebay
 - Foam OK; remove protection battery & add auralex foam in its place.



3.3uF Mundorf
(NB not 33uF!!)
10uF Solen PP
(was 2x 4.7uF)
1.0uF Mundorf

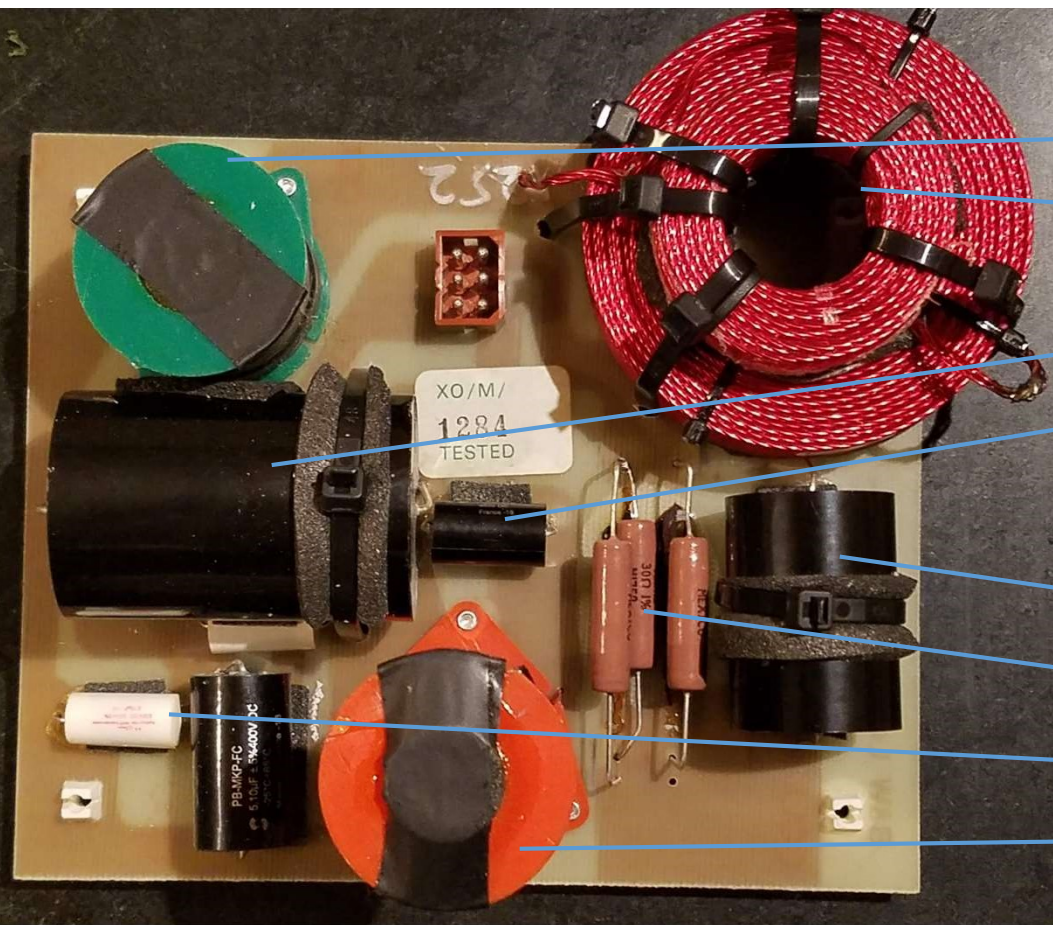


2.3mH Solen aircore
22uF Solen PP (here 21)
5.1 Solen + 0.15 Mundorf
1.0uF Solen PP
62uF Solen PP (here 63)



CUT to separate
LF from MF+HF

83uF Solen (36+47) (here 85)
27uF Solen PP (here 26)
36uF Solen PP (here 35)



MF

- 15mH (original)

- 2.3mH

- 62uF || 1.0uF

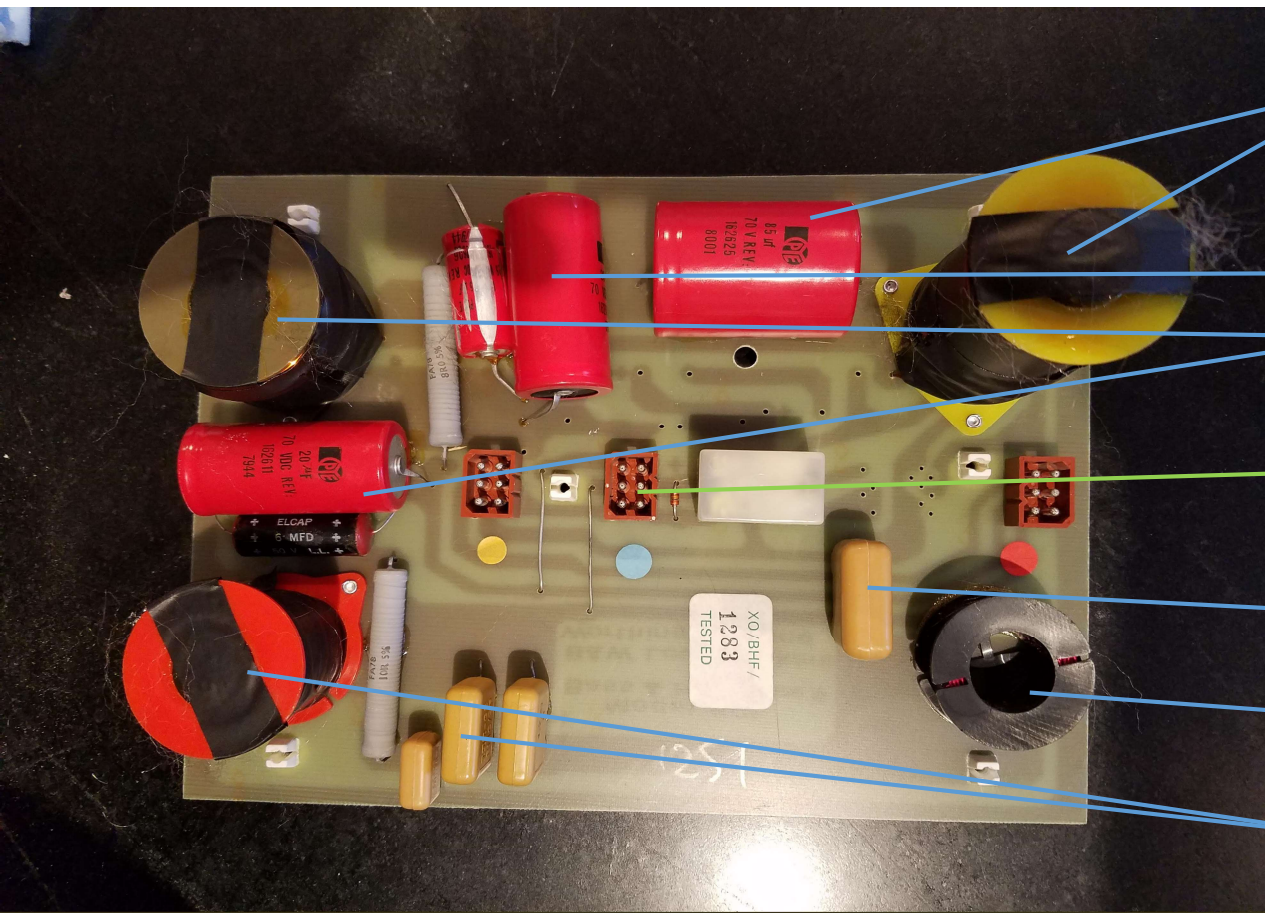
1.0uF

- 21uF

- 6R = 15 || 15 || 30

- 5.1uF || 0.15uF

- 8.7mH (original)



LF
6.5mH + 85uF

LF 36uF + 8R

LF 2.7mH + 26uF

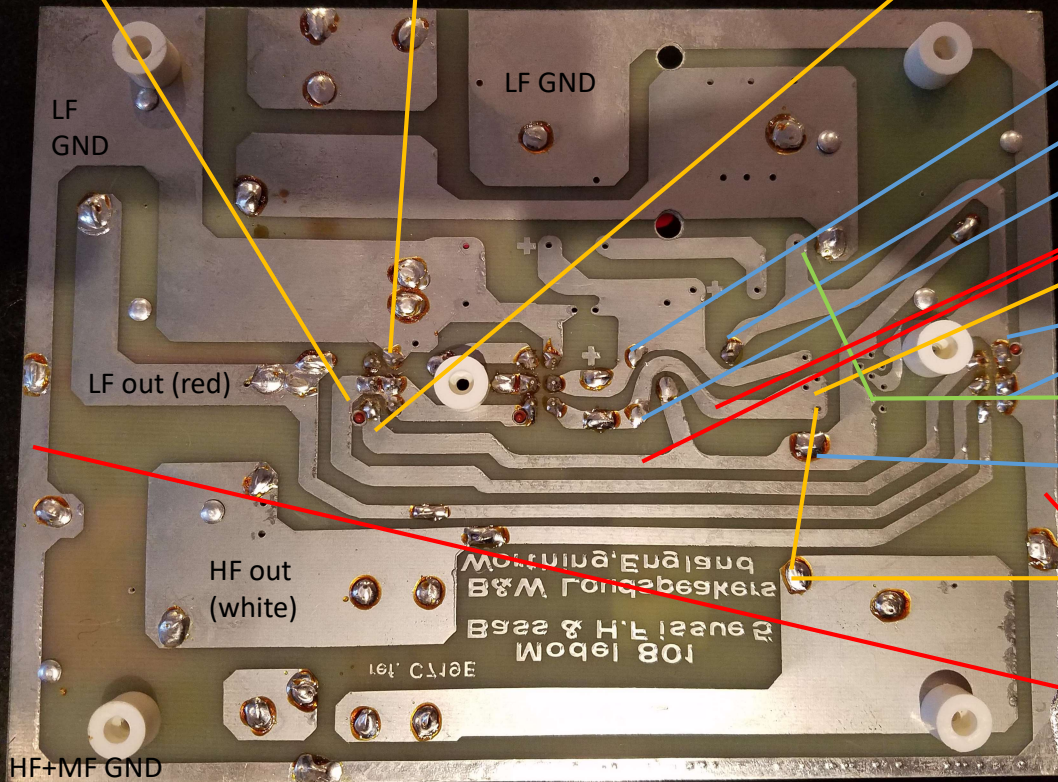
Protection board
(DISCONNECTED)

HF 3.3uF

HF 0.2mH

HF
10uF + 1.0mH

MF XO out (white) MF XO Gnd (black) – CUT trace MF XO in (red) – bridged to new HF input



Relay coil

Relay in

Relay out

CUT

New HF+MF input

Brown = hot in

Blue = black = gnd

Relay bypass

Old HF input cap
goes away

New HF cap goes to
the spare trace

CUT so that MF/HF
have separate GND
from LF



Relay bypass

HF/MF input
(black=gnd)

New MF XO Gnd

